

WEEKLY *Communique*

STFC Supporting Caregivers throughout BC's Interior

DON'T MISS THESE UPCOMING EVENTS

SEXUAL EXPLOITATION & HUMAN TRAFFICKING

Tuesday, January 21
6:00pm-8:30pm (PST)

FOSTERING EARLY DEVELOPMENT FOR CAREGIVERS

Wednesday mornings
10:00 - 11:30am (PST)

ROBYN GOBBEL HELPING KIDS FIND THEIR VOICE

Thursday, February 13
9:00am-12Noon (PST)

YOU CAN STILL REGISTER FOR THIS
WORKSHOP UNTIL MONDAY!

VIRTUAL SAFE BABIES

Monday & Wednesdays
6:30pm - 8:30pm (PST)

CARING FOR THE ROOTS WITH TRACY AZEVEDO

Thursday, February 6
9:30am-12Noon (PST)

ROBYN GOBBEL SHUTDOWN. STONEWALLED & ALONE

Tuesday, March 4
9:00am-12Noon (PST)

For more information, please see attached posters.

DEFIANCE RESOURCES

1. Oppositional Defiant Disorder
2. ADHD - 10 Rules for Parents of Defiant Kids with ADHD
3. FASD - "Oppositional" Behaviour and FASD (Please note that this is not a "journal / scientific" paper - if you would like to read a more in-depth publication, Heated Behaviour in the Classroom for Children with FASD)
4. Dan Dubovsky Video - Comparing ODD, ADHD and FASD
5. Anxiety - Co-occurrence of ODD and Anxiety: Shared Risk Processes and Evidence for a Dual-Pathway Model
6. Autism and PDA (Pathological Demand Avoidance) - PDA Explained

Looking for more resources around defiance (and / or Oppositional Defiance Disorder) that is present with other mental health diagnoses? Talk to your Network Facilitator!

TIMES TO *Connect* IN PERSON

WILLIAMS LAKE CAREGIVER COFFEE DROP-IN

Mondays
9:00am - 10:30am
Hearth Restaurant

KAMLOOPS FOSTER PARENT DROP-IN

Wednesdays
9:00am - 10:00am

Followed by:

AUDIO BOOK CLUB
THE BREAKTHROUGH YEARS
Wednesdays
10am-12Noon (PST)
The Loft - 290 Maple St.
(2nd Floor of grey building)

VIRTUAL

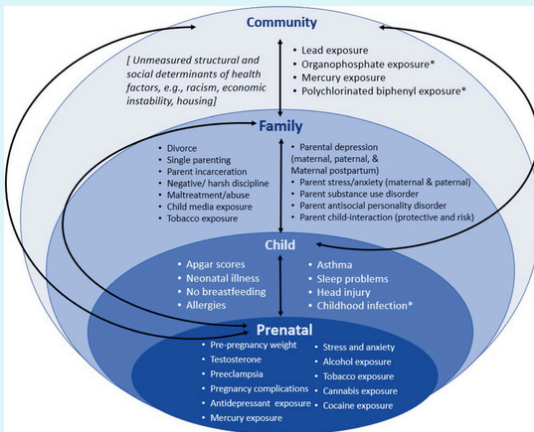
AUDIO BOOK CLUB **THE BREAKTHROUGH YEARS**

Wednesdays
10am-12Noon (PST) OR
6:30pm - 8:30pm (PST)
Zoom ID: 832 4280 1289

WEST KOOTNAY FOSTER PARENT DROP-IN

FRIDAYS
11:00am - 12noon
Zoom ID: 250 608 7674

RISK FACTORS FOR ADHD



Significant potentially modifiable risk factors for childhood attention-deficit/hyperactivity disorder within early development, across 6 meta-analyses (Bitsko et al., 2022; Claussen et al., 2022; Dimitrov et al., 2023; Maher et al., 2023; Robinson, Bitsko et al., 2022; So et al., 2022)

This introductory **paper** provides examples of comprehensive public health approaches focusing on policy, systems, and environmental changes across socio-ecological contexts to improve health and wellbeing through prevention, early intervention, and support across development using findings from these meta-analyses. Together, the findings from these studies and a commentary by an author independent from the risk studies have the potential to minimize risk conditions, prioritize prevention efforts, and improve the long-term health and wellbeing of children and adults with ADHD.

OMBUDSPERSON INVESTIGATING EXCLUSION OF STUDENTS FROM BC PUBLIC SCHOOLS

Jan 14, 2025 "Victoria-Today, the Ombudsperson, Jay Chalke, announced his office has begun an investigation into the exclusion of students from schools in BC's K-12 public education system.

"Our office has received complaints from across the province about children, including those with disabilities, being excluded from school with little or no instruction," said Chalke. "We will examine the extent to which K-12 students are being excluded from schools across the province and whether those exclusions are fair. We will assess the role of the Ministry of Education and Child Care and school districts in these exclusions."

Complaints received by the Ombudsperson's office indicate that school districts are excluding students due to disruptive or unsafe behaviour, or inadequate resources devoted to adequately support the student's learning in the school. In some cases schools are reported to have informally excluded students from school entirely or for much of the school day.

"I am concerned about the outcomes for children who are excluded from school with little or no instruction," said Chalke. "Children have limited options to address unfairness in their education and school environments. By examining this issue we can make recommendations to support the ministry and school districts in meeting their inclusive education commitments and obligations to all students."

Students or families of students who wish to contribute to the Ombudsperson's investigation can fill out a brief, confidential questionnaire. Those interested in speaking directly with an Ombudsperson investigator about their experience can provide their contact information when replying to the questionnaire. The questionnaire will be open until April 1, 2025.

Connect with us... SUPPORT TO FAMILY CARE NETWORK PROGRAM

Program Coordinator: Kari Bepple
kbepple@interiorcommunityservices.bc.ca
 Cell: (250) 819-1919

Office: (236) 421-0031 Toll Free: 1-877-376-3660

Network Facilitators:
 Renata Bonthoux (250) 319-6557
rbonthoux@interiorcommunityservices.bc.ca
 Jessica Galbraith (250) 819-5819
jgalbraith@interiorcommunityservices.bc.ca
 Marna Forsyth (250) 609-2017
mforsyth@interiorcommunityservices.bc.ca
 Jane Wesko (250) 608-7674
jwesko@arcprograms.com

Tabitha Fournier (250) 320-4603
tfournier@interiorcommunityservices.bc.ca
 James Weir (250) 426-6013
jweir@interiorcommunityservices.bc.ca



Interior Community Services
 Enriching Lives. Strengthening Communities

Need resources or information? Check out our website!

Are you wanting more information about upcoming training in your area, helpful resources or information about our program? Find all this and much more at our website:
www.icsfp.info/outofcareproviders



Find us on Facebook!
 Connect with us on our 'ICS Support To Family Care Network' Facebook page and our agency's 'Interior Community Services' Facebook page.